

Viking Installation Guide



Viking Range Corporation

111 Front Street

Greenwood, Mississippi 38930 USA

(662) 455-1200

For product information,

call 1-888-VIKING1 (845-4641)

or visit the Viking Web site at

vikingrange.com

Electric Induction Ranges

IMPORTANT – Please Read and Follow!

- Before beginning, please read and follow these instructions completely and carefully.
- Do not remove permanently affixed labels, warnings, or plates from product. This may void the warranty.
- Please observe all local and national codes and ordinances.
- Please ensure that this product is properly grounded.
- Installation must conform with local codes, or in the absence of codes, with the National Electrical Code, ANSI/NFPA 70, latest edition.
- In CANADA: Electrical installation must be in accordance with the current CSA C22.2 Canadian Electrical Codes Part 1 and/or local codes.
- Installer should leave these instructions with the consumer who should retain for local Inspector's use and for future reference.
- Consumer should retain this guide for the local Electrical Inspector's use.

! WARNING
The use of cabinets for storage above the appliance may result in potential fire or burn hazard. Combustible items may ignite, metallic items may become hot and cause burns. If a cabinet storage is to be provided, the risk can be reduced by installing a rangehood that projects horizontally a minimum of 5" (12.7 cm) beyond the bottom of the cabinets.

! WARNING
This appliance should not be used for space heating. This information is based on safety considerations.

! WARNING
ELECTRICAL GROUNDING INSTRUCTIONS
This appliance must be electrically in accordance with local codes, or in the absence of local codes, the National Electrical ANSI/NFPA 70, latest edition.
FOR PERSONAL SAFETY, THIS APPLIANCE MUST BE PROPERLY GROUNDED.

General Information

- All openings in the wall behind the appliance and/or in the floor under the appliance should be sealed.
- Keep appliance area clear and free from combustible materials, gasoline and other flammable vapors.
- Disconnect the electrical supply prior to servicing and/or cleaning.
- When removing the appliance for service and/or cleaning, disconnect AC power supply and carefully remove the appliance by pulling forward.
- Electrical requirements are listed in the product specifications chart. Electrical installation should comply with national and local codes.
- DO NOT remove protective packaging until you are ready to perform the installation.

Electrical Requirements

Check your national and local codes regarding this unit. This rangetop is supplied with a 3 wire, 240/208 VAC, 60 Hz conduit which is equipped with a No. 10 ground wire. See electrical connection section for grounding instructions. **This unit should be fused separately.**

! CAUTION
Be sure all electrical power is off between the breaker box and the junction box, until the unit is installed and ready to operate. The junction box should be connected to a suitable ground.

Electrical Connection

! WARNING
Electrical power to the unit must be shut off while line connections are being made. Failure to do so could result in serious injury or death.

When making the wire connections, use the entire length of the conduit provided (3 feet). The conduit must not be cut. Connect the red and black leads from the unit conduit to the corresponding leads in the junction box. The bare ground wire in the conduit is connected to the unit frame. When connecting to a 3-conductor branch circuit, if local codes permit, connect the bare ground connector lead of the unit to the branch circuit neutral (gray or white in color).

DO NOT USE AN EXTENSION CORD WITH THIS APPLIANCE. SUCH USE MAY RESULT IN A FIRE, ELECTRICAL SHOCK OR OTHER PERSONAL INJURY.

Back Trim Accessories

Assembly and installation instructions are included with all back trim accessories.

Dimensions & Specifications

Induction/Radiant Rangetop

Description	VCRT301		VCRT361			
Overall Width	29 7/8" (75.9 cm)		35 7/8" (91.1 cm)			
Overall Height From Bottom	BASE HEIGHT To top of glass frame 7 7/8" (20.0 cm)		ADDITIONS TO BASE HEIGHT To top of island trim - add 1 1/4" (3.2 cm) To top of backguard - add 6" (15.2 cm) To top of high-shelf - add 23 1/2" (59.7 cm)			
Overall Depth From Rear	To edge of side panel - 24" (61.0 cm) To end of control panel - 25 15/16" (65.9 cm) To end of knobs - 27 7/16" (69.7 cm)					
Cutout Width	30" (76.2 cm)		36" (91.4 cm)			
Cutout Height	7 1/2" (19.1 cm)					
Cutout Depth	24" (61.0 cm)					
Electrical Requirements	3 - Wire, 240/208 VAC, 60 Hz, electrical connection. Unit is equipped with No. 10 ground wire in conduit. Should be fused separately.					
Maximum Amps	240v - 37.9 amps 208v - 32.8 amps		240v - 55.0 amps 208v - 50.2 amps			
Surface Element Rating	240V		208V			
	Left Front	2500 watts	1875 watts	Left Front	2200 watts	1650 watts
	Left Rear	1500 watts	1125 watts	Left Rear	1500 watts	1125 watts
	Center Front	1800 watts	1350 watts	Center Front	1800 watts	1350 watts
	Bridge	800 watts	600 watts	Bridge	800 watts	600 watts
	Center Rear	1800 watts	1350 watts	Center Rear	1800 watts	1350 watts
	Right Front	1200 watts	900 watts	Right Front	1200 watts	900 watts
Right Rear	3300 watts	2475 watts	Right Rear	3300 watts	2475 watts	
Approx. Shipping Wt.	110 lbs. (49.5 kg)		125 lbs. (56.2 kg)			

Dimensions & Specifications

All Induction Rangetop

Description	VIRT301		VIRT361			
Overall Width	29 7/8" (75.9 cm)		35 7/8" (91.1 cm)			
Overall Height From Bottom	BASE HEIGHT To top of glass frame 7 7/8" (20.0 cm)		ADDITIONS TO BASE HEIGHT To top of island trim - add 1 1/4" (3.2 cm) To top of backguard - add 6" (15.2 cm) To top of high-shelf - add 23 1/2" (59.7 cm)			
Overall Depth From Rear	To edge of side panel - 24" (61.0 cm) To end of control panel - 25 15/16" (65.9 cm) To end of knobs - 27 7/16" (69.7 cm)					
Cutout Width	30" (76.2 cm)		36" (91.4 cm)			
Cutout Height	7 1/2" (19.1 cm)					
Cutout Depth	24" (61.0 cm)					
Electrical Requirements	3 - Wire, 240/208 VAC, 60 Hz, electrical connection. Unit is equipped with No. 10 ground wire in conduit. Should be fused separately.					
Maximum Amps	240v - 37.9 amps 208v - 32.8 amps		240v - 56.3 amps 208v - 56.3 amps			
Surface Element Rating	240V		208V			
	Left Front	2500 watts	1875 watts	Left Front	2700 watts	2025 watts
	Left Rear	1500 watts	1125 watts	Left Rear	1800 watts	1350 watts
	Center Front	2700 watts	2025 watts	Center Front	2700 watts	2025 watts
	Center Rear	1800 watts	1350 watts	Center Rear	1800 watts	1350 watts
	Right Front	1200 watts	900 watts	Right Front	1200 watts	900 watts
	Right Rear	3300 watts	2475 watts	Right Rear	3300 watts	2475 watts
Approx. Shipping Wt.	110 lbs. (49.5 kg)		125 lbs. (56.2 kg)			

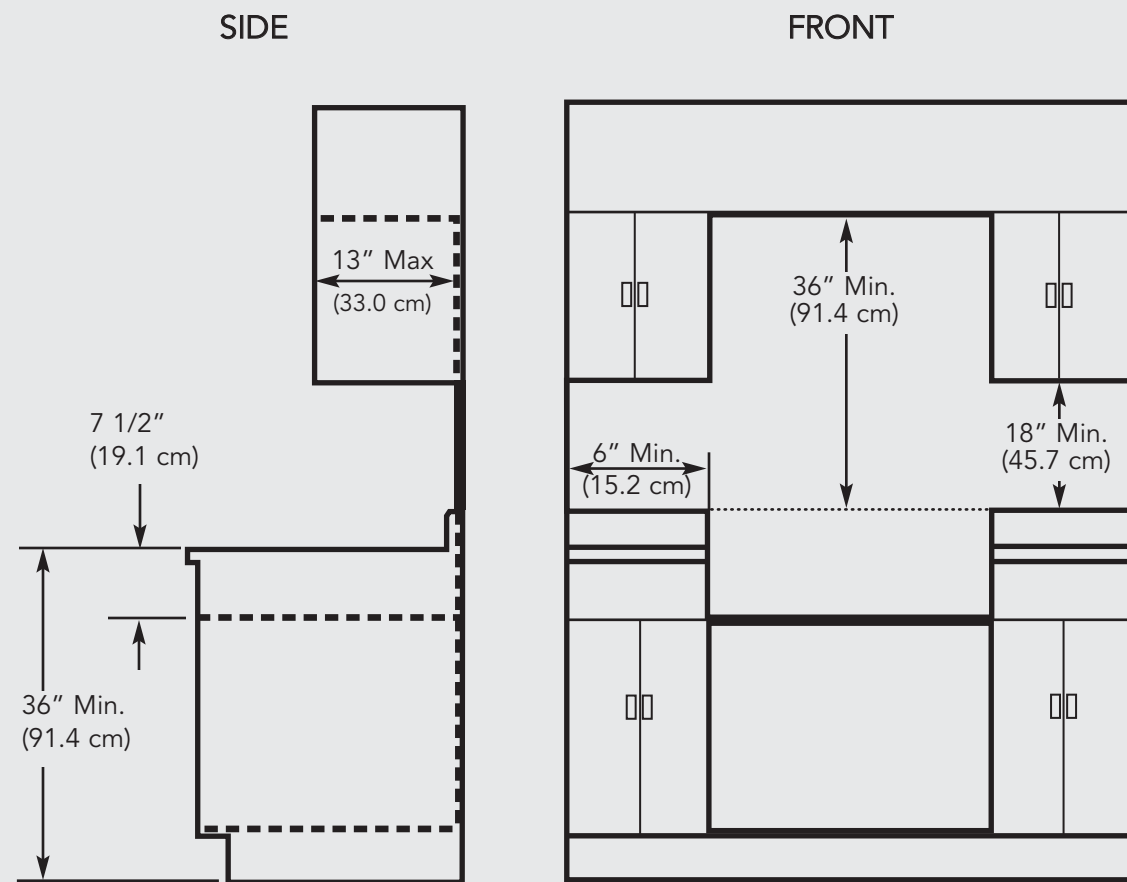
Minimum Clearance from adjacent combustible construction

- Cooking surfaces and below (36" [91.4 cm] and below)
 - Sides - 0"
 - Rear - 0" with backguard or highshelf; 0" with island trim and non-combustible wall; 6" (15.2 cm) with island trim and combustible rear wall
 - Top grate support - 36" (91.4 cm)
- Above cooking surface (above 36" [91.4 cm])
 - Sides - 6" (15.2 cm)
 - Within 6" (15.2 cm) side clearance, wall cabinets no deeper than 13" (33.0 cm) must be minimum 18" (45.7 cm) above cooking surface.
 - Wall cabinets directly above product must be minimum 36" (91.4 cm) above cooking surface.

Installation

Proximity to cabinet installation

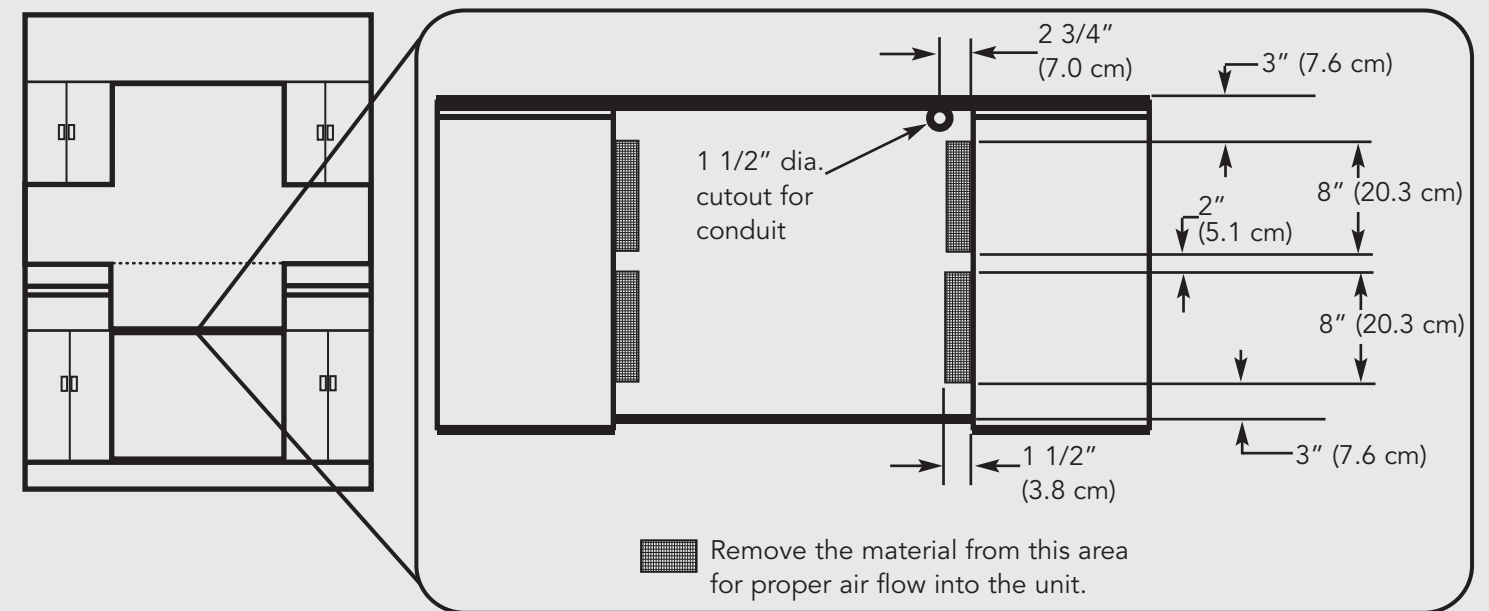
1. This rangetop may be installed directly adjacent to existing 36" (91.4 cm) high base cabinets.
2. The rangetop CANNOT be installed directly adjacent to sidewalls, tall cabinets, tall appliances, or other side vertical surfaces above 36" (91.4 cm) high. There must be a minimum of 6" (15.2 cm) side clearance from the rangetop to such combustible surfaces above the 36" (91.4 cm) counter height.
3. Within the 6" (15.2 cm) side clearance to combustible vertical surfaces above 36" (91.4 cm), the maximum wall cabinet depth must be 13" (33.0 cm) and wall cabinets within this 6" (15.2 cm) side clearance must be 18" (45.7 cm) above the 36" (91.4 cm) high countertop.
4. Wall cabinets above the rangetop must be a minimum of 36" (91.4 cm) above the rangetop cooking surface for the full width of the rangetop.



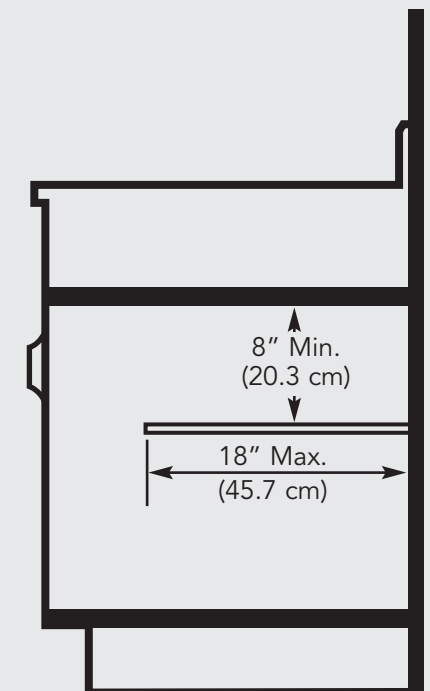
Clearances

Interior Cabinet Clearances for proper airflow

Detailed View of Bottom Support



IMPORTANT: The electronic components for the induction elements in the rangetop need some air circulation. To ensure long life of electronic components, it is required that a minimum of 8" (20.3 cm) of open space remain between the bottom of the unit and any shelf underneath. The maximum length of the shelf underneath is to be 18" (45.7 cm). There should be no partition or shelf **directly** underneath the unit.



Final Preparation

1. The interior of the oven should be washed thoroughly with hot, soapy water to remove film residues and installation debris before being used for food preparation, then rinsed and wiped dry. Solutions stronger than soapy water are rarely needed.
2. Some stainless steel parts may have a plastic protective wrap, which must be removed. All stainless steel body parts should be washed with hot soapy water and with liquid cleaner designed for this material. If build-up occurs, do not use steel wool, abrasive cloths, cleaners or powders! If it is necessary to scrape stainless steel to remove encrusted materials, soak with hot, wet cloths to loosen the material, then use a wood or nylon scraper. Do not use a metal knife, spatula, or any other metal tool to scrape stainless steel!! Scratches are almost impossible to remove.

Service & Parts

Only authorized replacement parts may be used in performing service on the appliance. Do not repair or replace any part of the appliance unless specifically recommended in the manual. All other servicing should be referred to a qualified technician.

Contact Viking Range Corporation, (888) 845-4641, for the nearest service parts distributor in your area.

Record the following information indicated below. You will need it if service is ever required. The serial number and model number for your appliance are located on the identification plate mounted on the inside of the water tank opening.

Model number

Serial number

Date of purchase

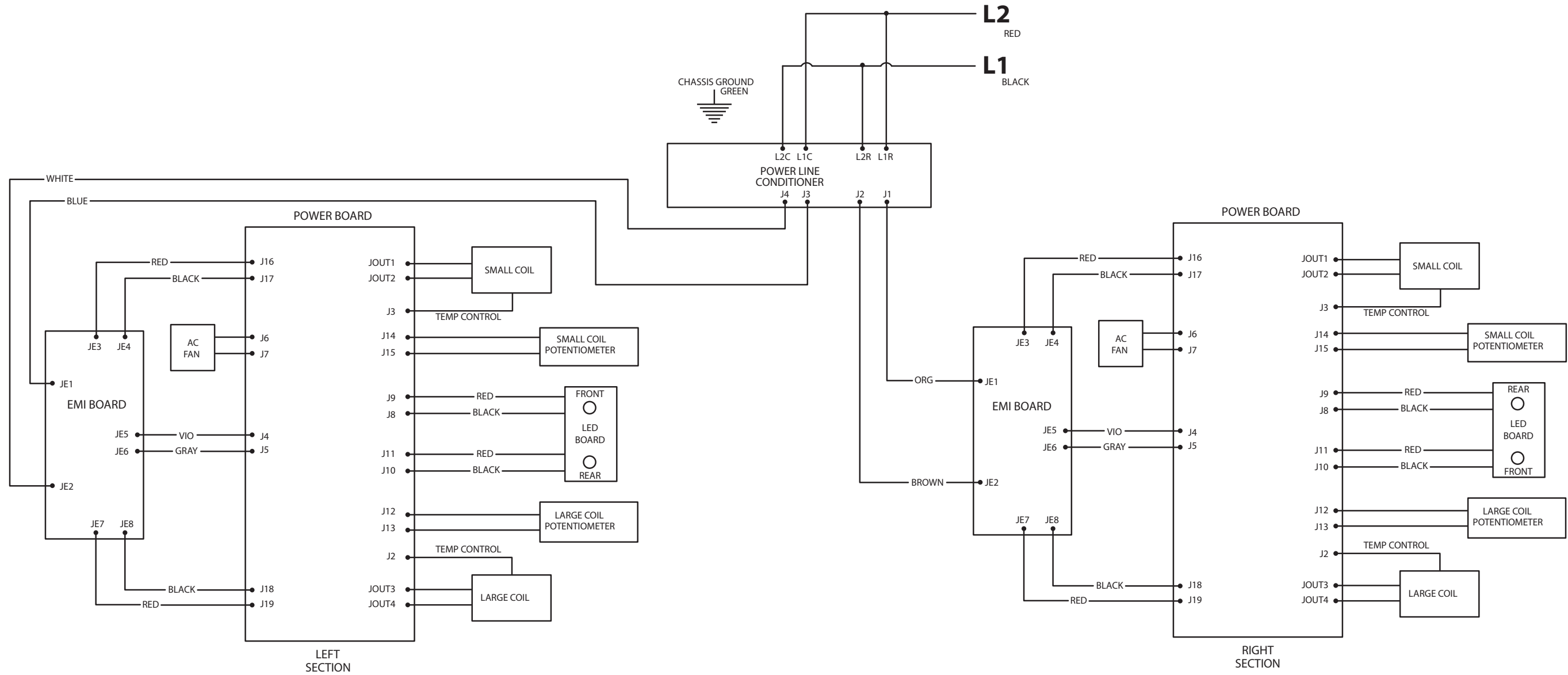
Date installed

Dealer's name

Address

These installation instructions should remain with the unit for future reference.

Electric All Induction 30" Wide Rangetop Wiring Diagram



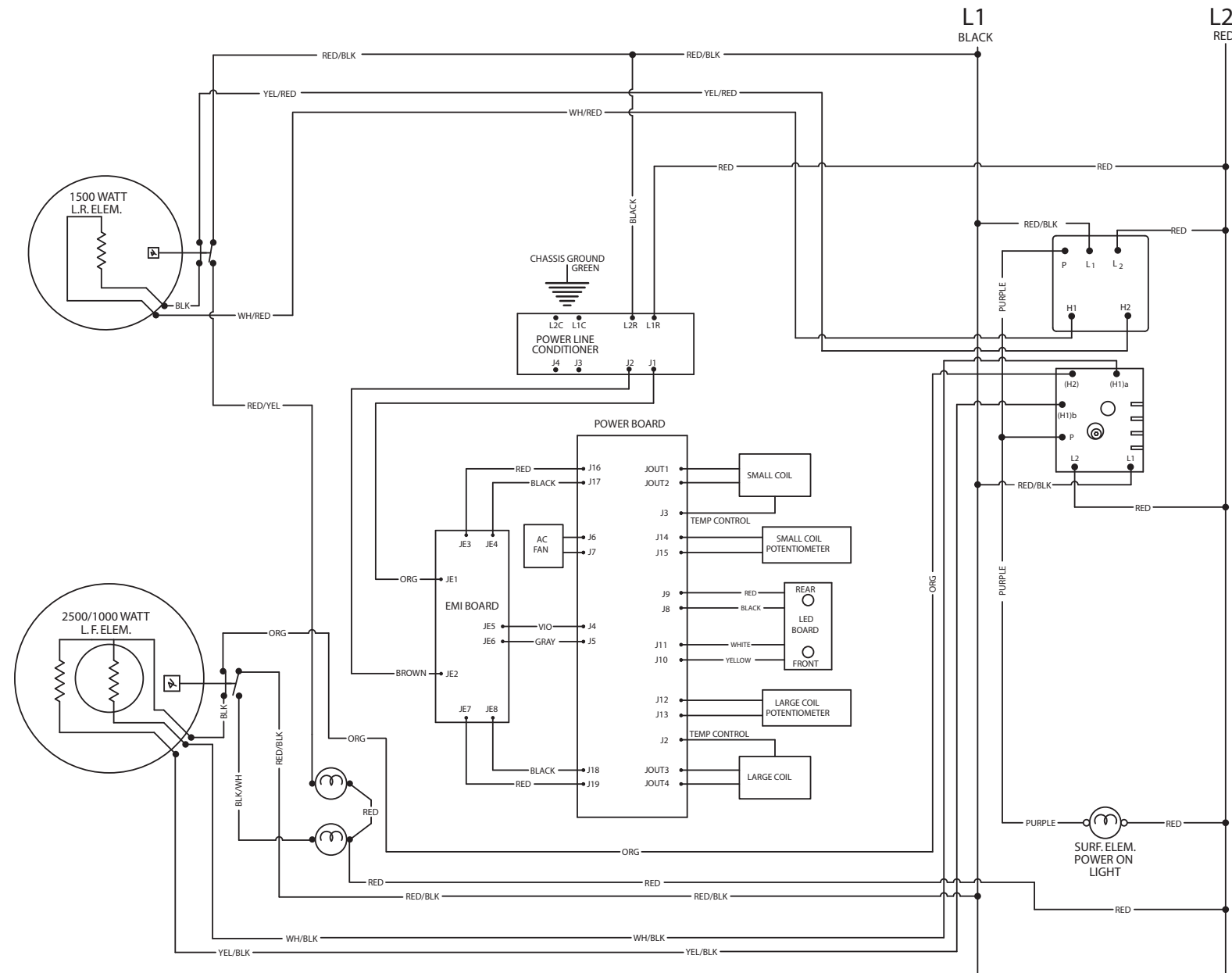
⚠ WARNING

This unit must be properly grounded. See installation instructions for proper grounding instructions. **NOTE:** Trailers or stripes will be the second color in a color combination.

⚠ CAUTION

Label all wires prior to disconnection when servicing controls. Wiring errors can cause improper and dangerous operation. Verify proper operation after servicing.

Electric Induction/Radiant 30" Wide Rangetop Wiring Diagram



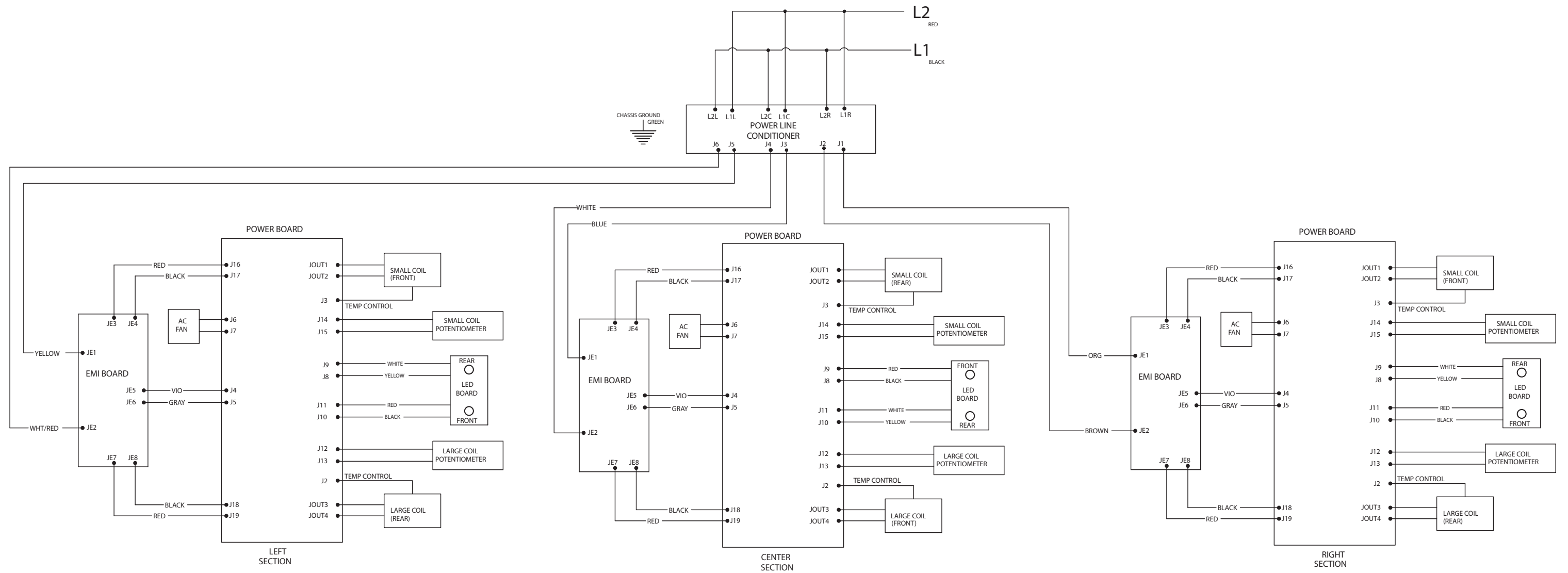
⚠️ WARNING

This unit must be properly grounded. See installation instructions for proper grounding instructions. **NOTE:** Trailers or stripes will be the second color in a color combination.

⚠️ CAUTION

Label all wires prior to disconnection when servicing controls. Wiring errors can cause improper and dangerous operation. Verify proper operation after servicing.

Electric All Induction 36" Wide Rangetop Wiring Diagram



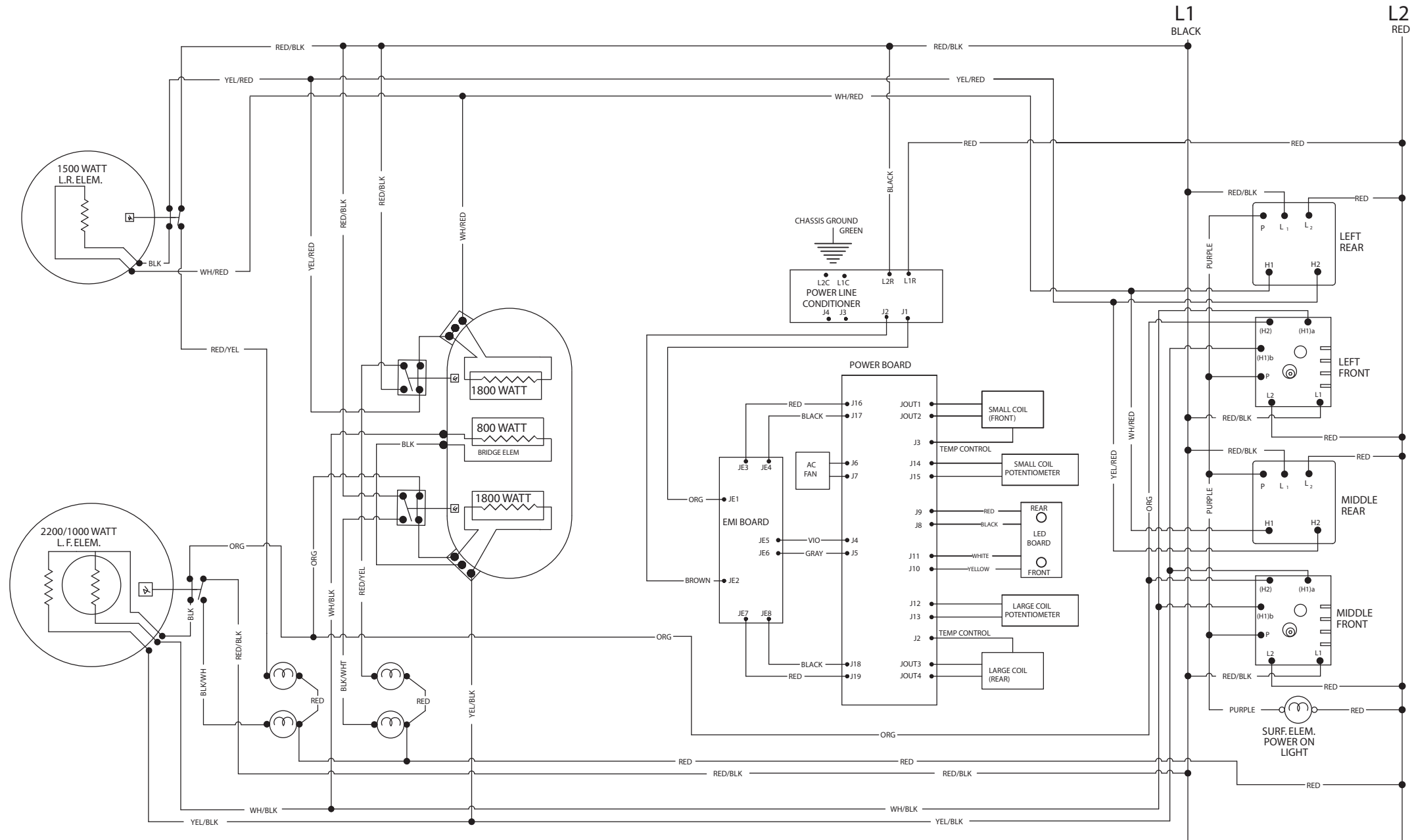
WARNING

This unit must be properly grounded. See installation instructions for proper grounding instructions. **NOTE:** Trailers or stripes will be the second color in a color combination.

CAUTION

Label all wires prior to disconnection when servicing controls. Wiring errors can cause improper and dangerous operation. Verify proper operation after servicing.

Electric Induction/Radiant 36" Wide Rangetop Wiring Diagram



WARNING

This unit must be properly grounded. See installation instructions for proper grounding instructions. **NOTE:** Trailers or stripes will be the second color in a color combination.

CAUTION

Label all wires prior to disconnection when servicing controls. Wiring errors can cause improper and dangerous operation. Verify proper operation after servicing.